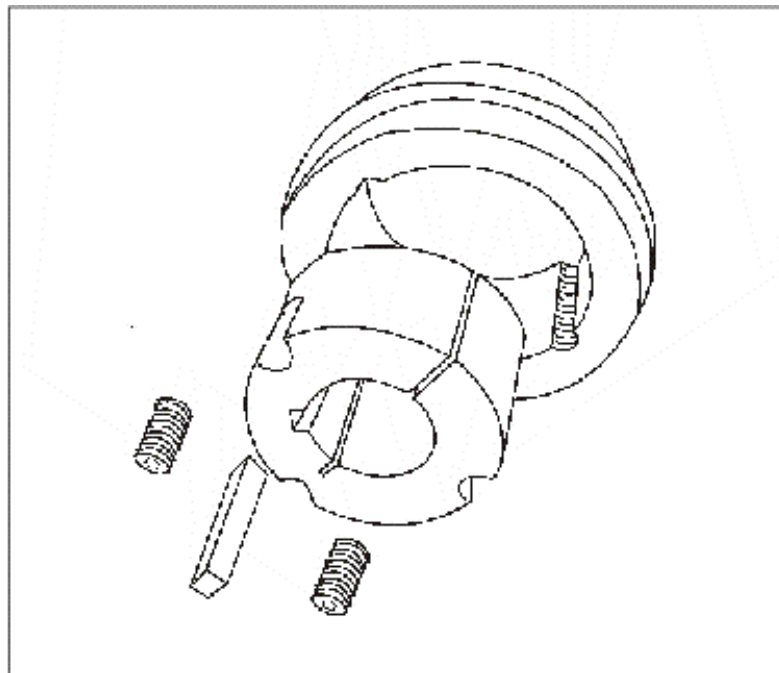
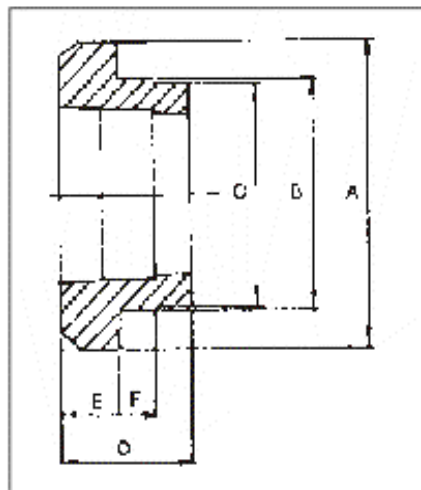
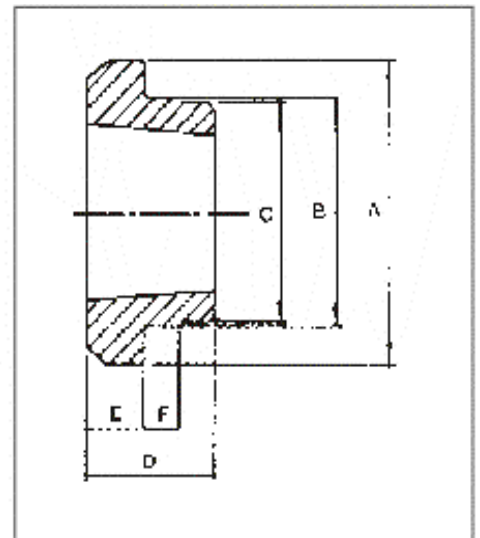


Taper Bore Weld - on hubs



W WELD- ON HUBS

Hub Ref.	Bush no.	A	B	C	D	E	F
W12	1215	73.03	63.50	62.71	38.10	15.88	9.53
W16	1615	82.55	73.03	72.24	38.10	15.88	9.53
W20	2017	101.60	88.90	88.11	44.45	19.05	14.45
W25	2517	127.00	111.13	110.34	44.45	19.05	14.45
W30	3030	149.86	133.35	132.56	76.20	25.40	19.05
W35	3535	184.15	158.75	157.96	88.90	31.75	25.40
W40	4040	225.43	196.85	196.06	101.60	31.75	31.75
W45	4545	254.00	222.25	221.46	114.30	38.10	38.10



WH WELD- ON HUBS

Hub Ref.	Bush no.	A	B	C	D	E	F
WH12	1210	70	65	64.5	25	9	10
WH16-1	1610	80	75	74.5	25	9	10
WH20	2012	95	90	89.5	32	12	12
WH25	2517	115	110	109.5	44	19	15
WH30-2	3020	145	140	139.5	50	20	15
WH35	3525	190	180	179.5	65	25	25
WH40	4040	200	190	189.5	101	32	30
WH45	4545	210	200	199.5	114	40	30
WH50	5050	230	220	219.5	127	40	45